



European Masters

Edouard Manet

Study***ladder***

Edouard Manet

Born: 23 January 1832

Died: 30 April 1883

Style: Impressionism

Manet was one of the first French painters to adopt a more modern approach to painting. He initiated the transition from Realism to Impressionism in the early 1860s.

He is best known for his paintings of Parisian life, especially of people enjoying themselves socially at cafes or concerts. He also used the urban landscape of Paris as a backdrop for many of his paintings. Manet and the other Impressionist painters caused much controversy with their new style.



Self-Portrait with Palette, 1878–79. This painting sold on 22 June 2010 at Sotheby's Auction House for \$29.48 million.

Edouard Manet

A Bar at the Folies-Bergère

Date Completed: 1882

Medium: Oil on canvas

Dimensions: 96 cm × 130 cm (37.8 in × 51.2 in)

Location: Courtauld Institute of Art, London, England.



This painting was the last major work completed by Manet. It is set in a busy Parisian nightclub called the Folies-Bergère. Look at the top left hand corner and you will see the feet of the trapeze artist who would perform above the heads of the customers.

Edouard Manet

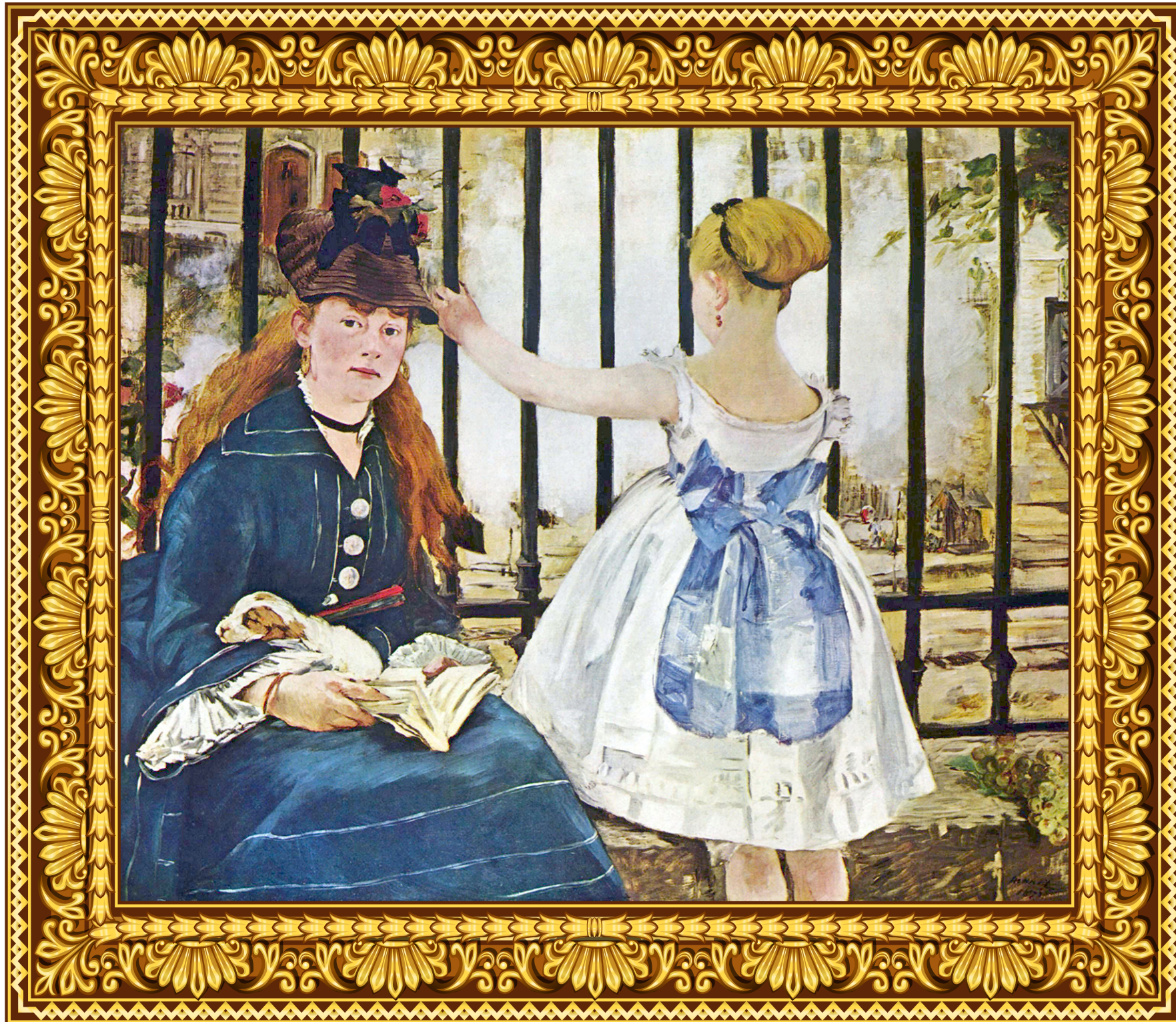
The Gare Saint-Lazare (The Railway)

Completed: 1873

Medium: Oil on Canvas

Dimensions: 111.5 cm × 93.3 cm (36 3/4 in × 45 1/8 in)

Located: National Gallery of Art, Washington DC, USA



This painting features a woman and a child in an urban setting in Paris. The woman is holding an open book and a sleeping puppy. The child is looking through the iron fence at the train below. You can see the rising smoke from a steam train in the background.

Edouard Manet



Claude Monet in his Studio Boat

Completed: 1874

Medium: Oil on canvas

Dimensions: 81 X 104 cm (31.9 X 40.9 in)

Located: Neue Pinakothek, Munich, Germany

Manet painted this picture of Claude Monet, the artist, and his wife Camille. Claude Monet would row this "studio" boat along the Seine River until he found something interesting to paint.

Manet uses free and colorful brush strokes to show reflections of light on the water.