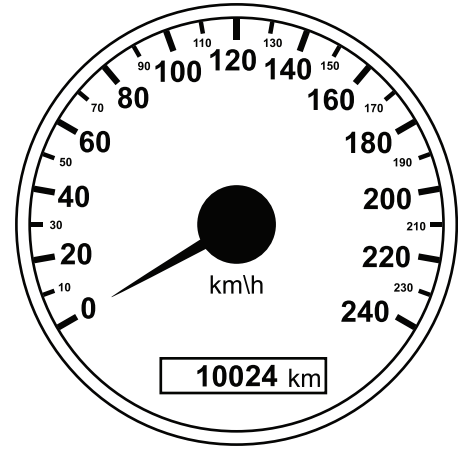


Name: \_\_\_\_\_

1) Shown is a car's odometer.

a) What is the total distance covered by the car till now? \_\_\_\_\_

b) After a 100 km trip, what distance will the odometer show? \_\_\_\_\_



2) Which is the most appropriate unit when measuring each length or distance?

a) The height of a tall building. \_\_\_\_\_

b) The distance between two towns. \_\_\_\_\_

c) The width of a screw. \_\_\_\_\_

d) A small child's height. \_\_\_\_\_

e) The length of a beam used in a building. \_\_\_\_\_

3) Circle the most accurate measurement for each length or distance.

a) The length of an average classroom. 3 m 10 m 22 m 27 m

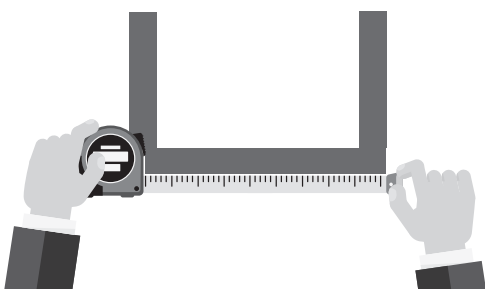
b) The length of a phone. 4 cm 6 cm 15 cm 27 cm

c) The distance a car can travel on a freeway in an hour. 8 km 28 km 30 km 85 km

d) The average length of a car. 0.8 m 2.1 m 4.2 m 8.7 m

e) The length of a key. 12 mm 22 mm 52 mm 126 mm

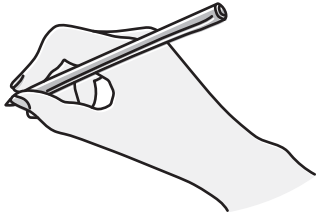
4) Sam measured the width of a picture frame.



a) About how wide is the picture frame? \_\_\_\_\_

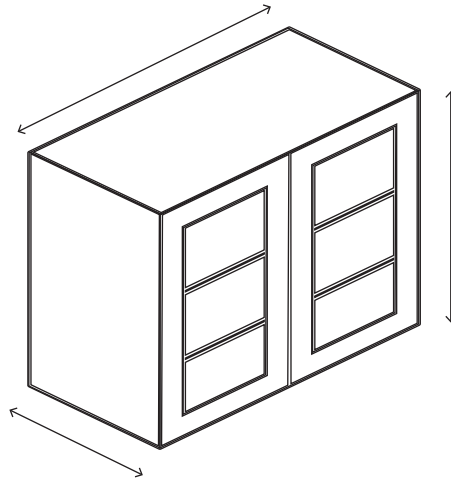
Name: \_\_\_\_\_

5) A person is holding a pencil.



a) About how long would the pencil be?  
(show your answer in both millimetres and centimetres.) \_\_\_\_\_ mm \_\_\_\_\_ cm

6) A storage cabinet is 1.2 m wide, 46 cm deep, and 94 cm high.  
Label the cabinet, showing its dimensions in millimetres.



7) Mali completed eight laps of a 400 m track. How many kilometres did Mali run? \_\_\_\_\_

8) Convert each length to the unit shown.

a) 4 cm = \_\_\_\_\_ mm

e) 6.8 cm = \_\_\_\_\_ mm

b) 12 m = \_\_\_\_\_ cm

f) 6.85 m = \_\_\_\_\_ cm

c) 6 km = \_\_\_\_\_ m

g) 9.82 km = \_\_\_\_\_ m

d) 30 mm \_\_\_\_\_ cm

h) 8.3 mm = \_\_\_\_\_ cm