

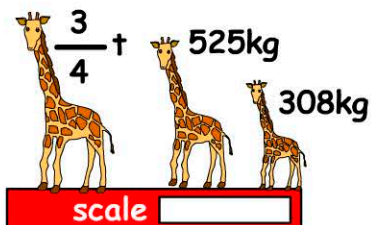
Mass

***USE A METRIC TONNE = 1000kg

Name:

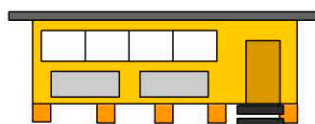
Date:

1. What's the reading on the scale?



- 1.25t 1308kg
 1.5t 1583kg

2. What's the weight of the building in tonnes?



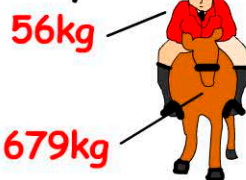
weight: 7t & 456kg

weight = tonnes

3. Jacob weighs 123lbs. Jemma is 13lbs heavier. What's Jemma's weight?

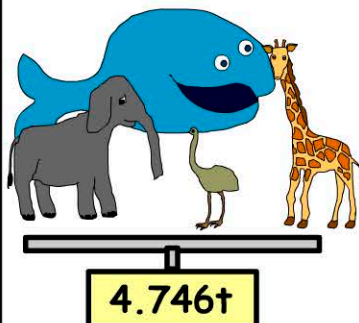
- 61.8kg 56.2kg
 72.2kg 118kg

4. The weight of the horse and jockey is:



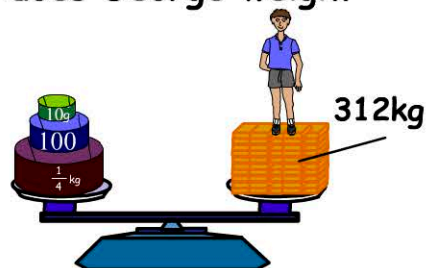
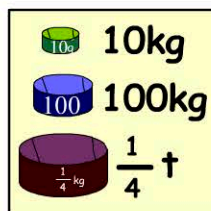
- 726lbs
 1426lbs
 1617lbs
 2689lbs

5. Which animal is being weighed?



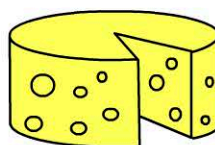
- A whale
 A giraffe
 An elephant
 An emu

6. How much does George weigh?



- 105lbs 125lbs
 115lbs 145lbs

7. What's the cost of $3\frac{1}{2}$ pounds of cheese?



\$12.80/lb

- \$12.80
 \$25.60
 \$38.40
 \$44.80

8. How many 1 ounce disks are needed to balance the scale?



- 50
 65
 80
 95

9. An airplane weighs 368459kg. How many tonnes is this?

t

10. 4.78t = kg