


Name: \_\_\_\_\_ Date: \_\_\_\_\_


## Note Value and Pitch

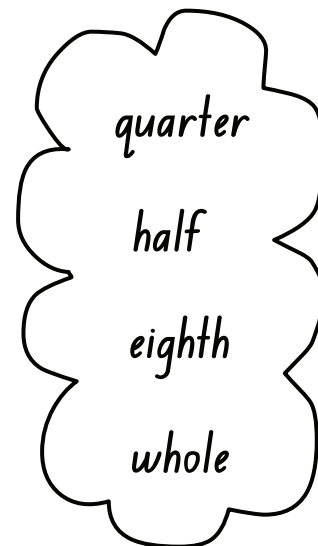
### Value

 This is a \_\_\_\_\_ note. It lasts for \_\_\_\_\_ beats.

 This is a \_\_\_\_\_ note. It lasts for \_\_\_\_\_ beats.

 This is a \_\_\_\_\_ note. It lasts for \_\_\_\_\_ beat.

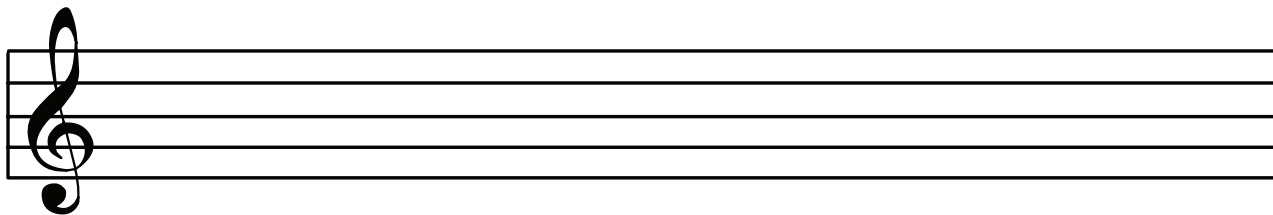
 This is a \_\_\_\_\_ note. It lasts for \_\_\_\_\_ beat.



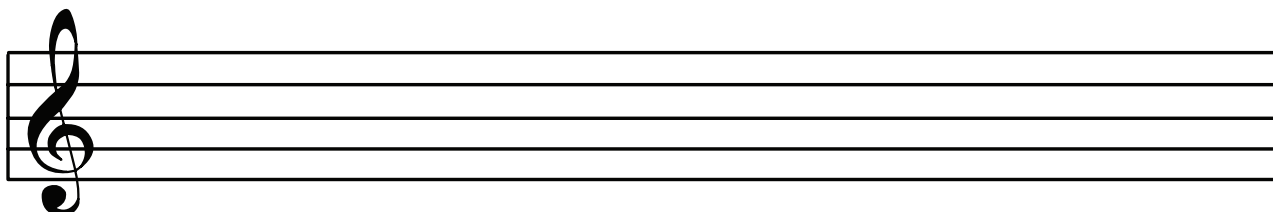
### Pitch

Draw 8 notes on the correct line or space on the treble staff:

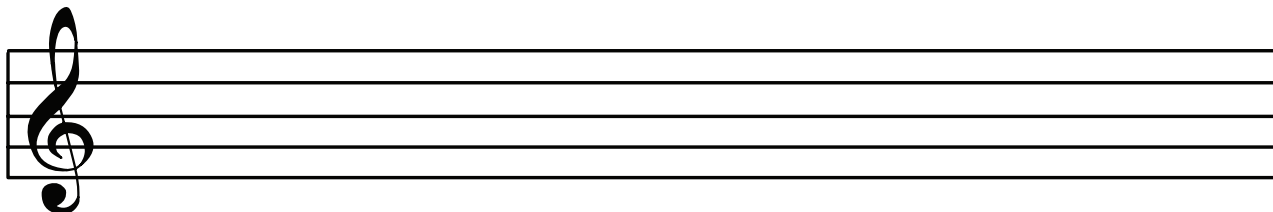
whole notes on A



half notes on G



quarter notes on



eighth notes on B

