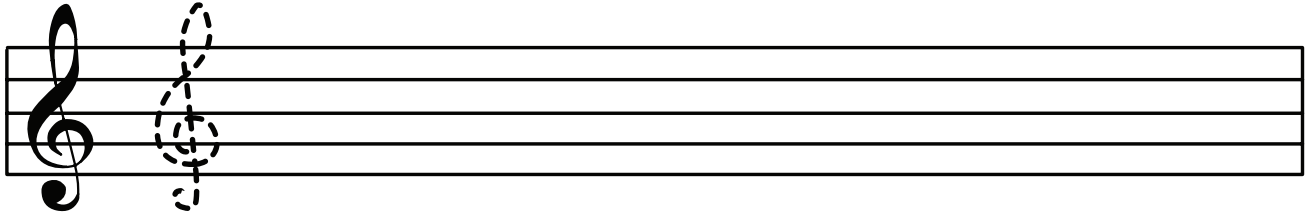


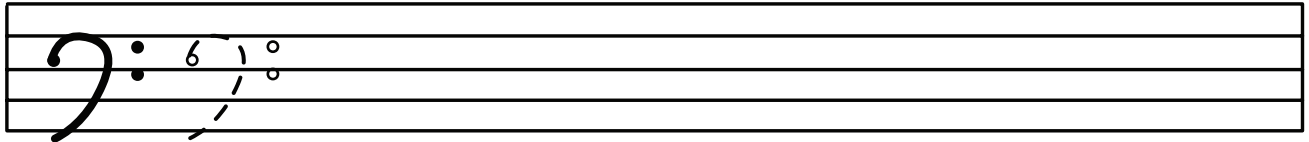
Name: _____ Date: _____

The Grand Stave

Draw 8 treble clefs



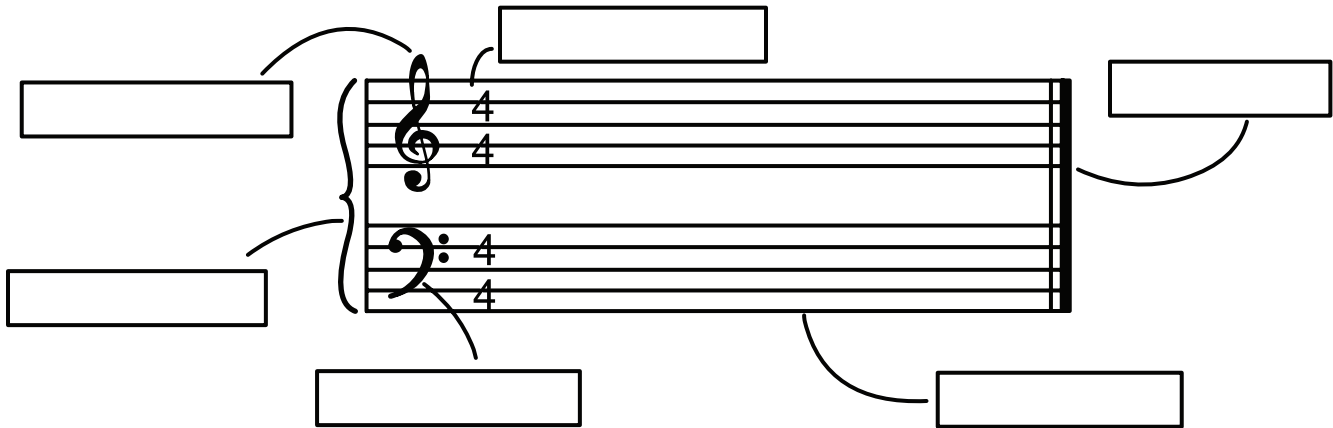
Draw 8 bass clefs



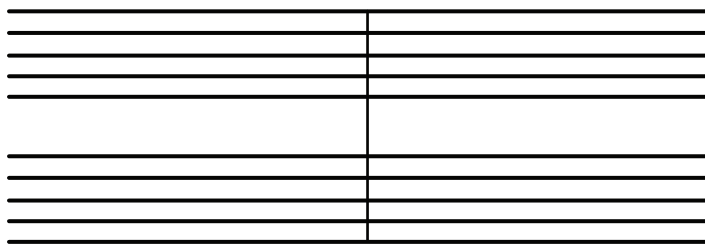
The bass clef and treble clef is joined together with a brace and a bar line at the beginning and a double bar line at the end.

Label the following parts of the Grand Stave:

- 1) staff or stave
- 2) treble clef
- 3) bass clef
- 4) time signature
- 5) brace
- 6) bar line



Complete the following Grand Stave:



Add four quarter notes to each bar on the treble clef

Add two half notes per bar on the bass clef