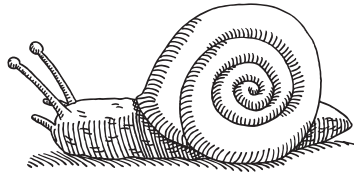


# Snails

Name: \_\_\_\_\_

## Snail Facts

• Snails and slugs are molluscs. (Molluscs have soft, slimy, boneless bodies.)



• There are land snails and slugs, sea snails and sea slugs, and freshwater snails.

• Normally, a snail's soft body is protected by a hard shell. Slugs also have a shell, but it can be very small or inside their body.

• The largest land snail is the Giant African Snail which can be over 30 cm long.

• Snails are eaten in many countries such as France, Greece and Italy.

• Snails are nocturnal animals which means they are most active at night.

Do you know any more interesting facts about snails?

## Slow or Fast?

Circle the animals that move slowly.

tortoise

deer

hare

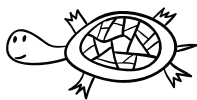
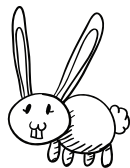
horse

snail

sloth

cheetah

starfish



Draw one "slow" animal and one "fast" animal.

## Spiral Design

When a snail senses danger it pulls its whole body into its shell. Most snail shells have a spiral design.

Create an interesting spiral design or pattern that is based on a snail shell.



## Writing

Choose whether each sentence ends in a question mark (?) or a full stop (.).

Snails move very slowly

How many snails did you find

Snails do not like salt

Do you like snails

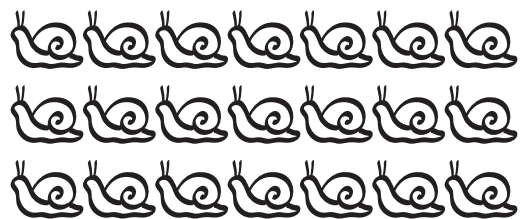
Snails eat plants

Snails have a hard shell

Can you see the snail slime

## Number Crunchers

How many snails altogether?



2 groups of 5 =

4 groups of 5 =

7 groups of 5 =

6 groups of 5 =

9 groups of 5 =

8 groups of 5 =

$5 + 5 + 5 =$

$5 + 5 + 5 + 5 =$

$5 + 5 + 5 + 5 + 5 =$

$5 + 5 + 5 + 5 + 5 + 5 =$

There are 5 snails in each bucket.

There are 30 snails altogether.

How many buckets are there?

