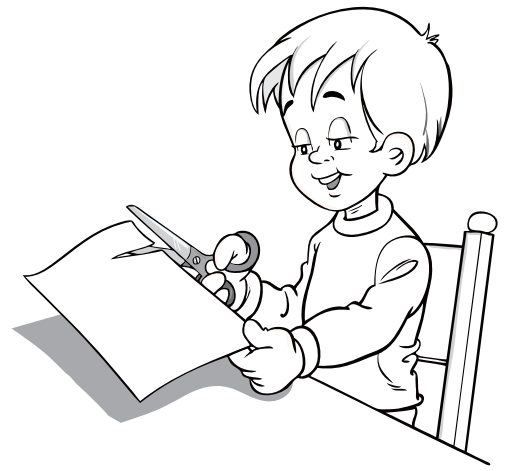
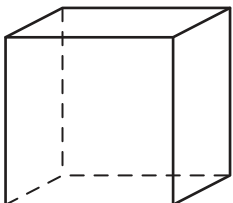
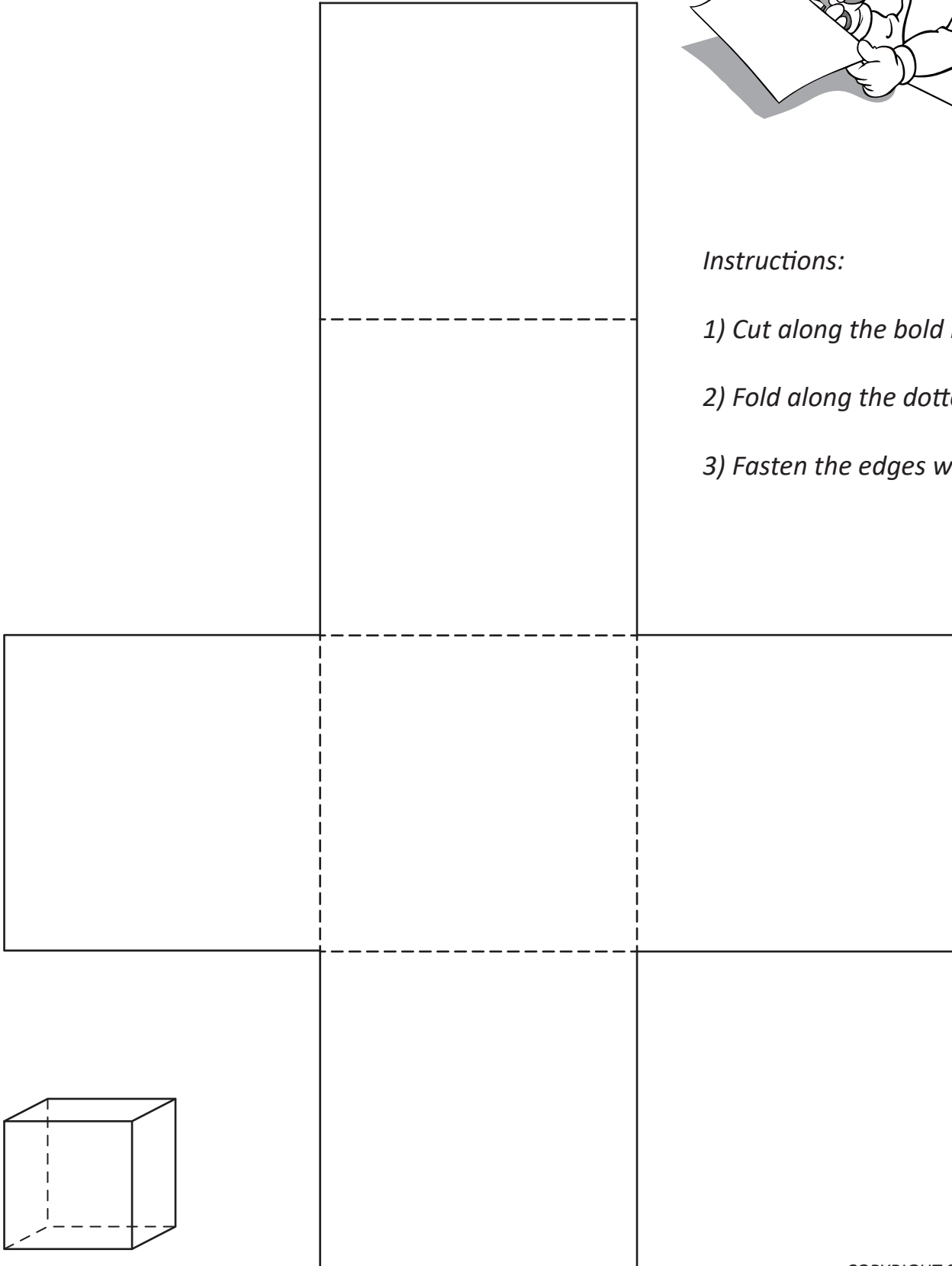


NET OF A CUBE

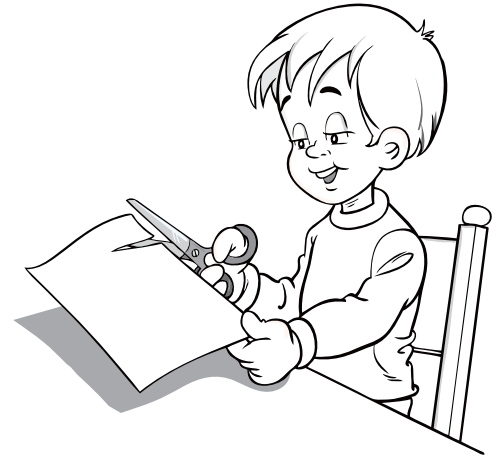


Instructions:

- 1) Cut along the bold lines.*
- 2) Fold along the dotted lines.*
- 3) Fasten the edges with tape.*

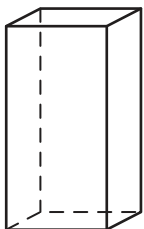
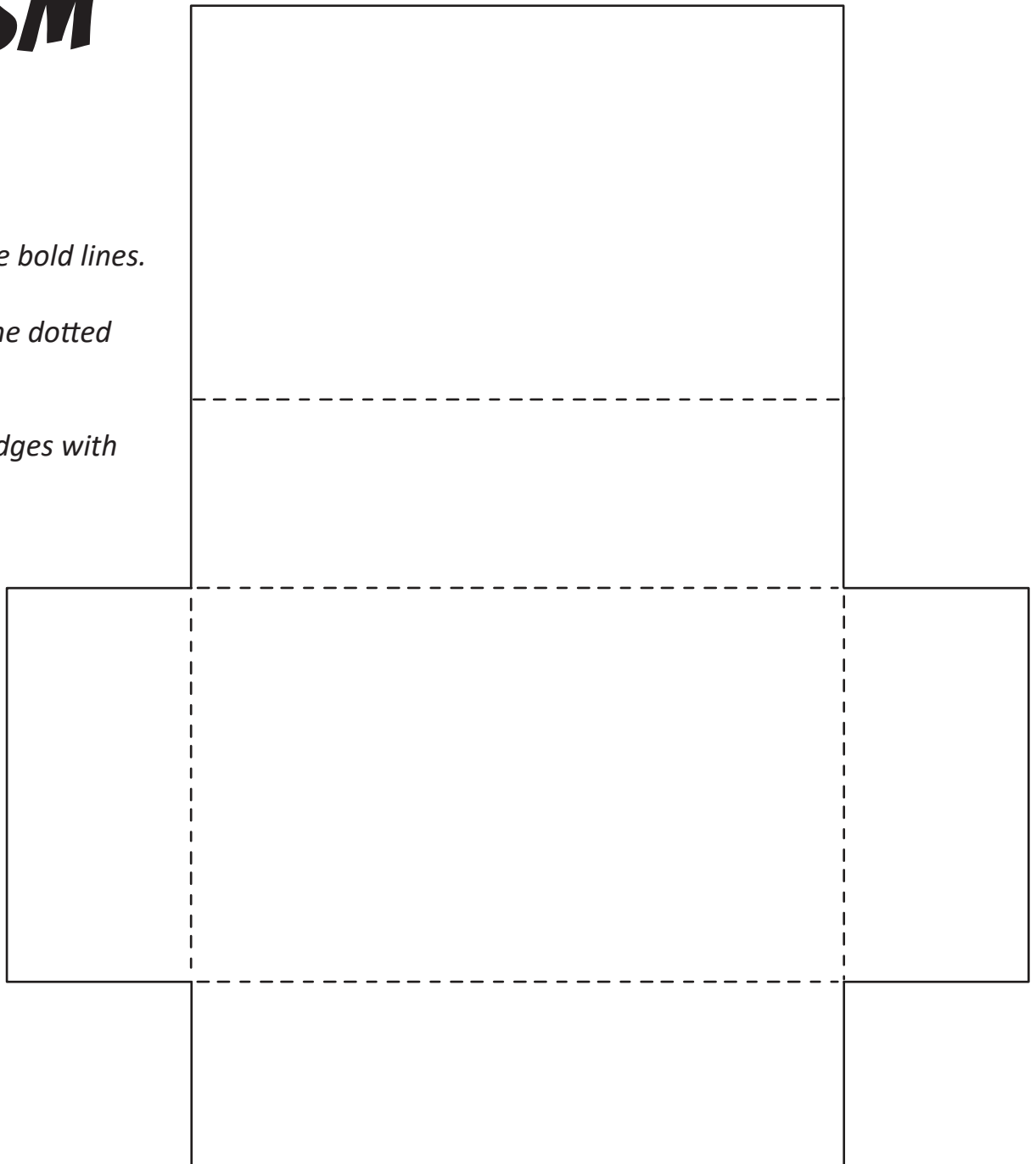


NET OF A RECTANGULAR PRISM



Instructions:

- 1) Cut along the bold lines.*
- 2) Fold along the dotted lines.*
- 3) Fasten the edges with tape.*

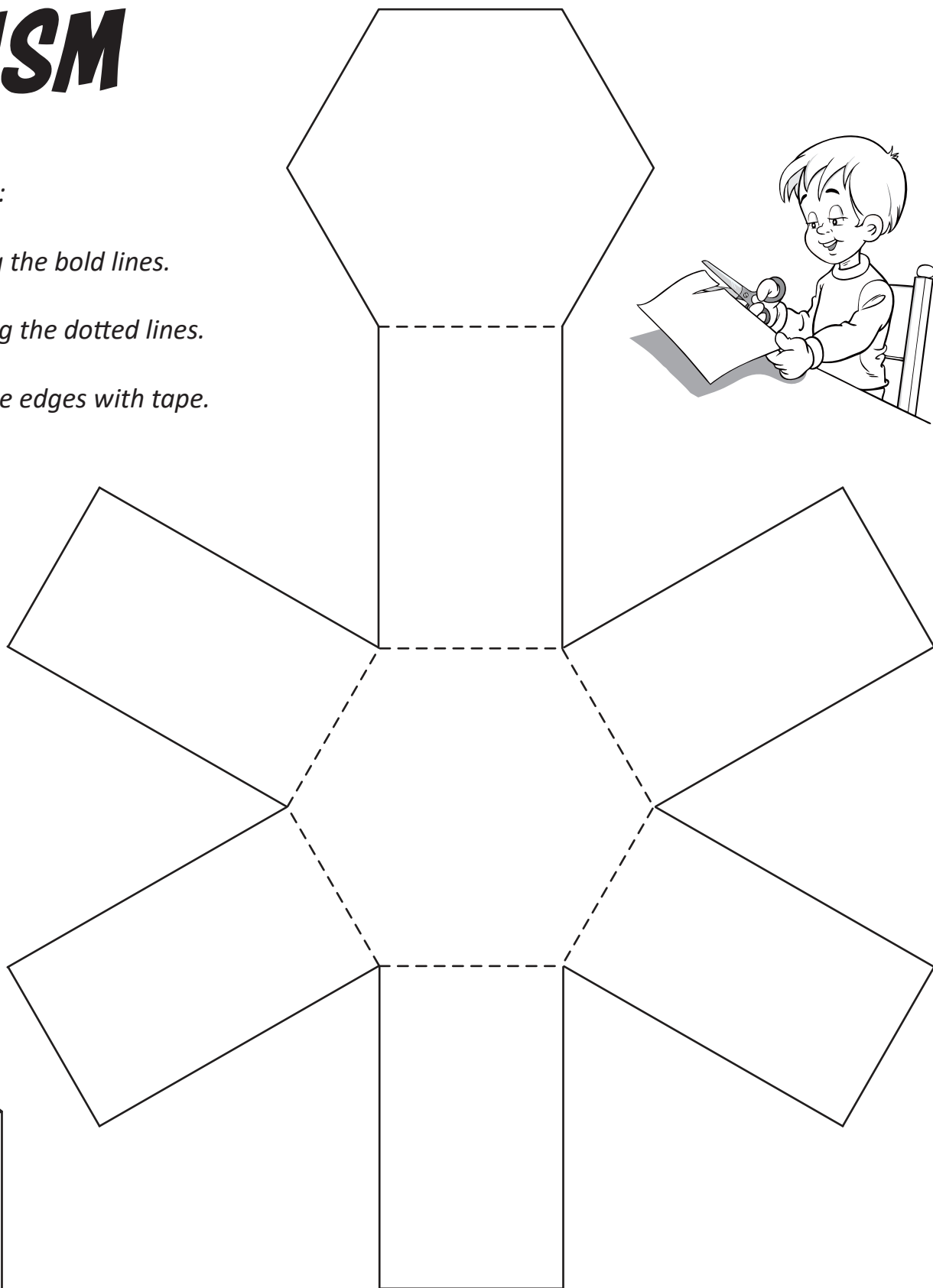
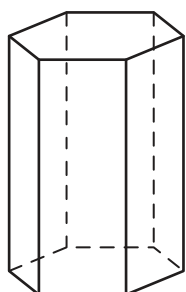
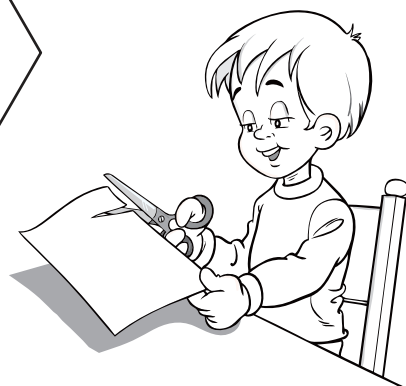


NET OF A HEXAGONAL PRISM

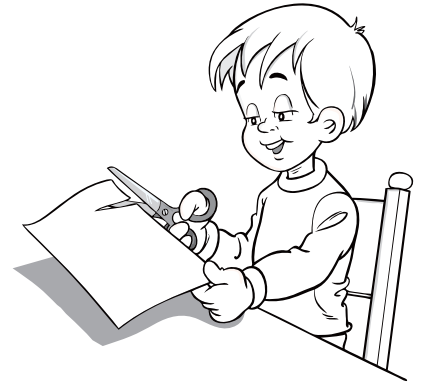
PRISM

Instructions:

- 1) Cut along the bold lines.*
- 2) Fold along the dotted lines.*
- 3) Fasten the edges with tape.*

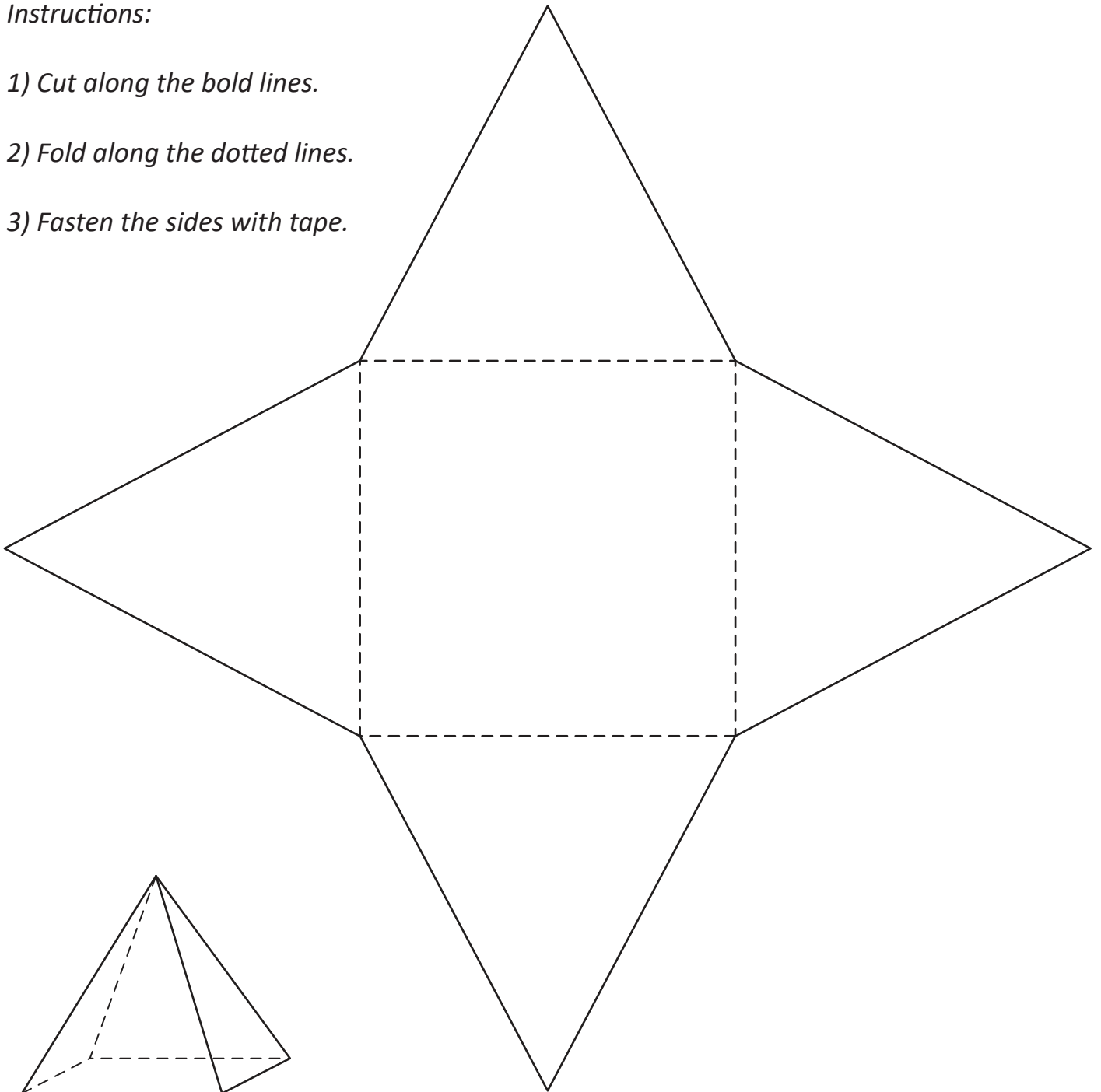


NET OF A SQUARE PYRAMID

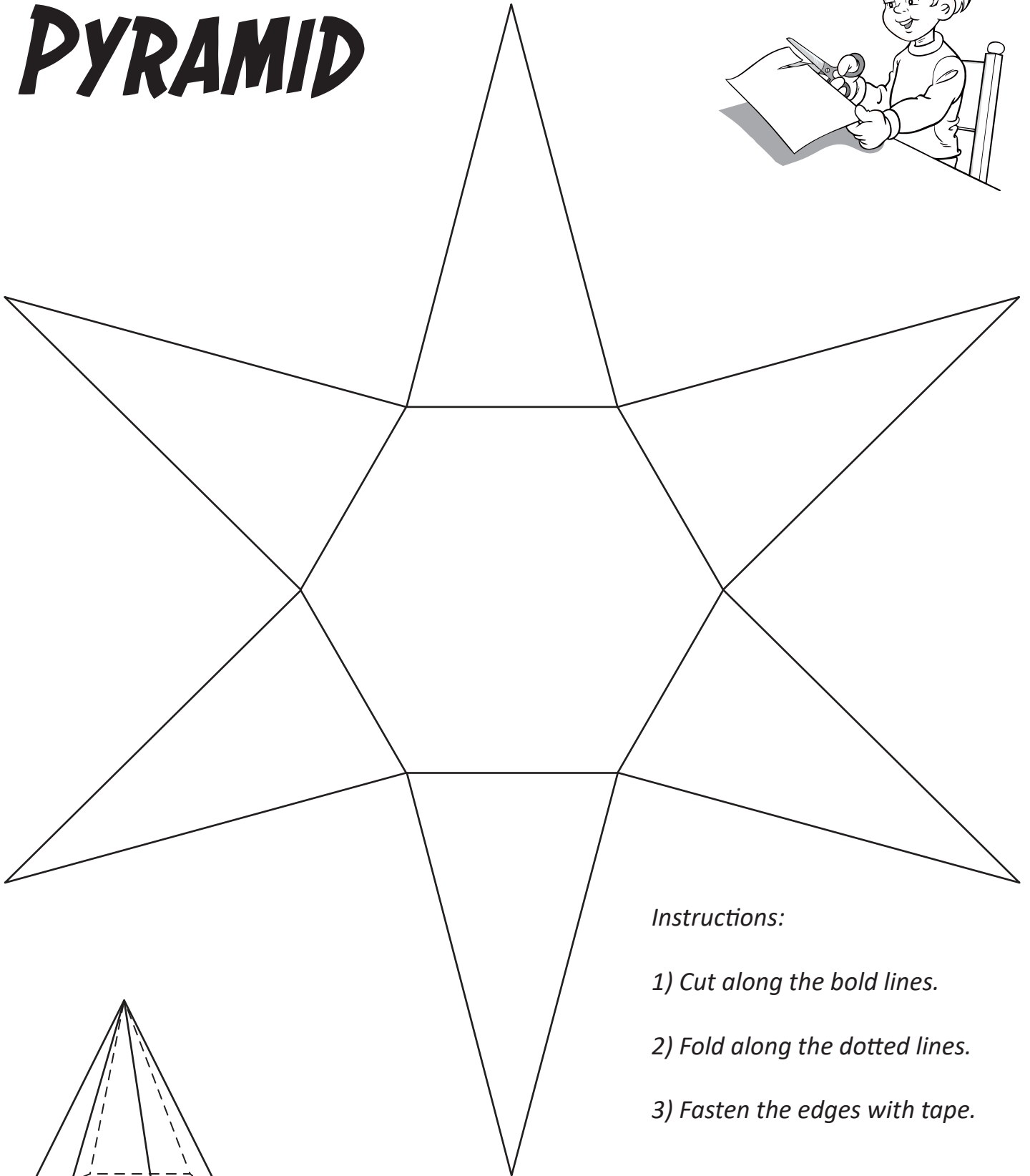
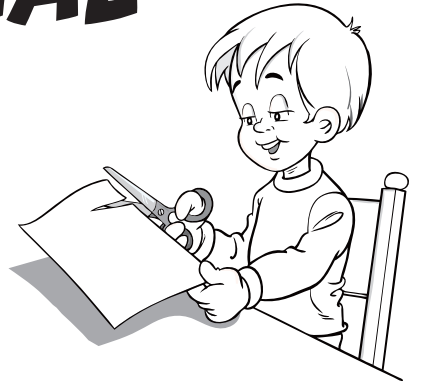


Instructions:

- 1) Cut along the bold lines.*
- 2) Fold along the dotted lines.*
- 3) Fasten the sides with tape.*

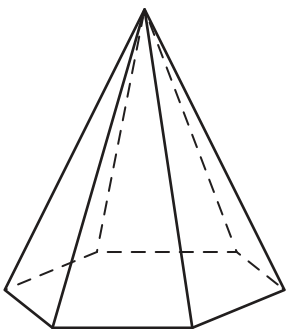


NET OF A HEXAGONAL PYRAMID



Instructions:

- 1) Cut along the bold lines.*
- 2) Fold along the dotted lines.*
- 3) Fasten the edges with tape.*



NET OF A CYLINDER

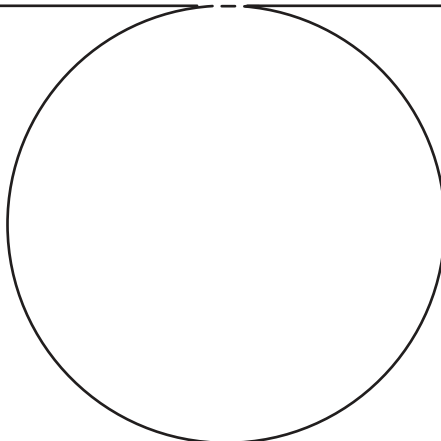
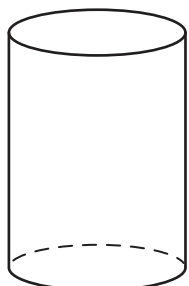
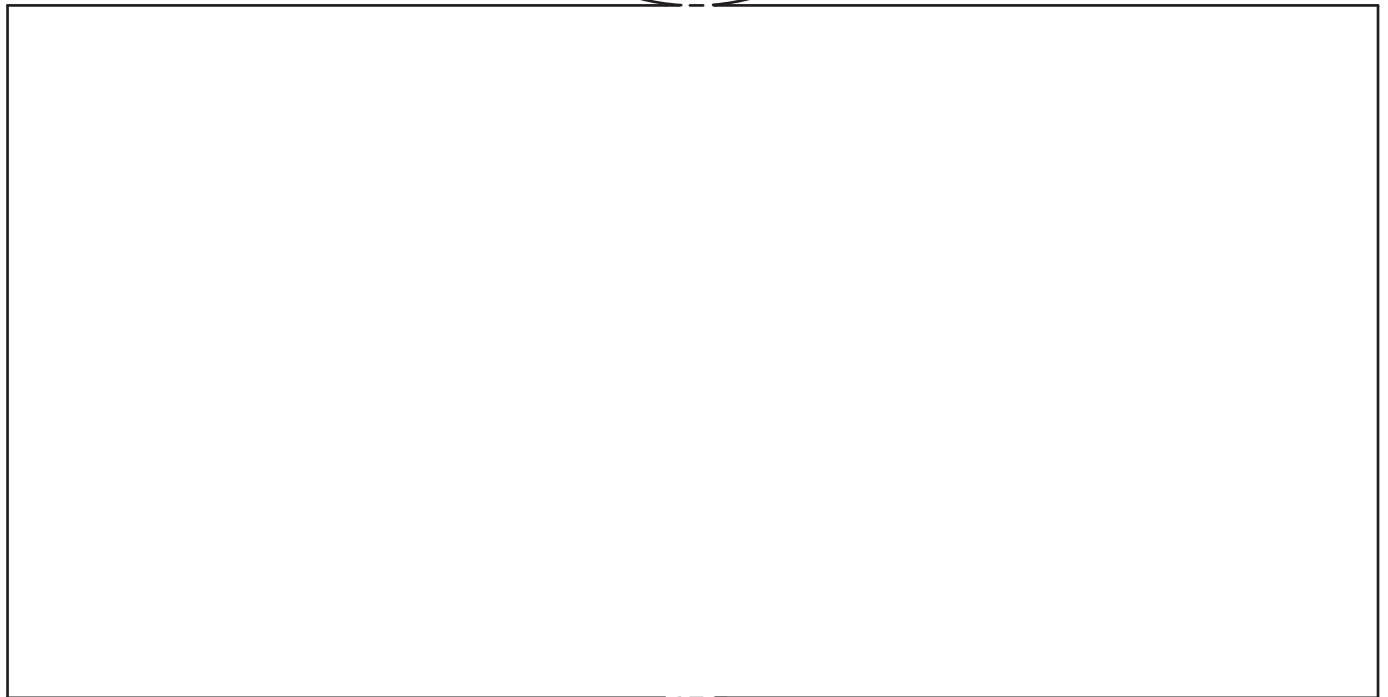
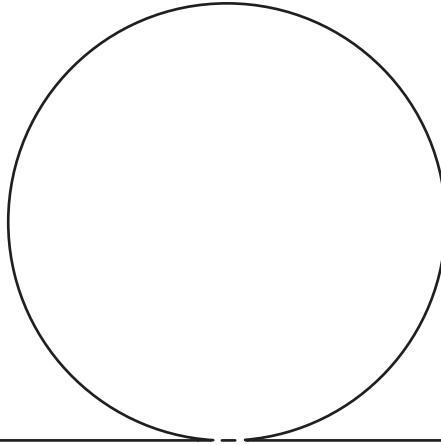
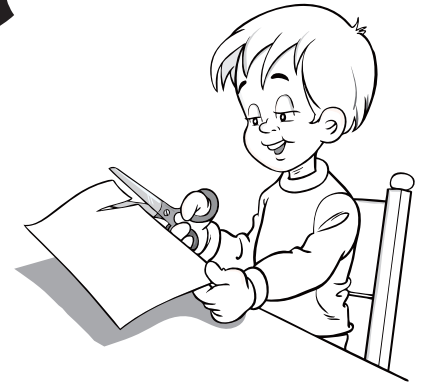
Instructions:

1) *Cut along the bold lines.*

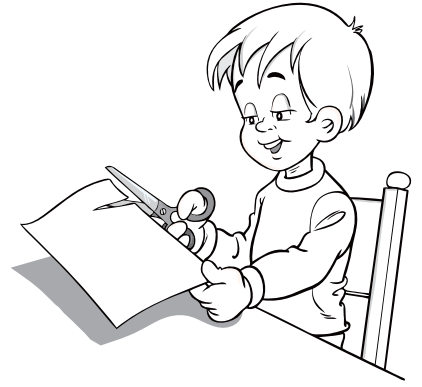
Note: Leave a small amount of the circumference of the circle attached to the larger segment.

2) *Fold along the dotted lines.*

3) *Fasten the edges with tape.*



NET OF A CONE



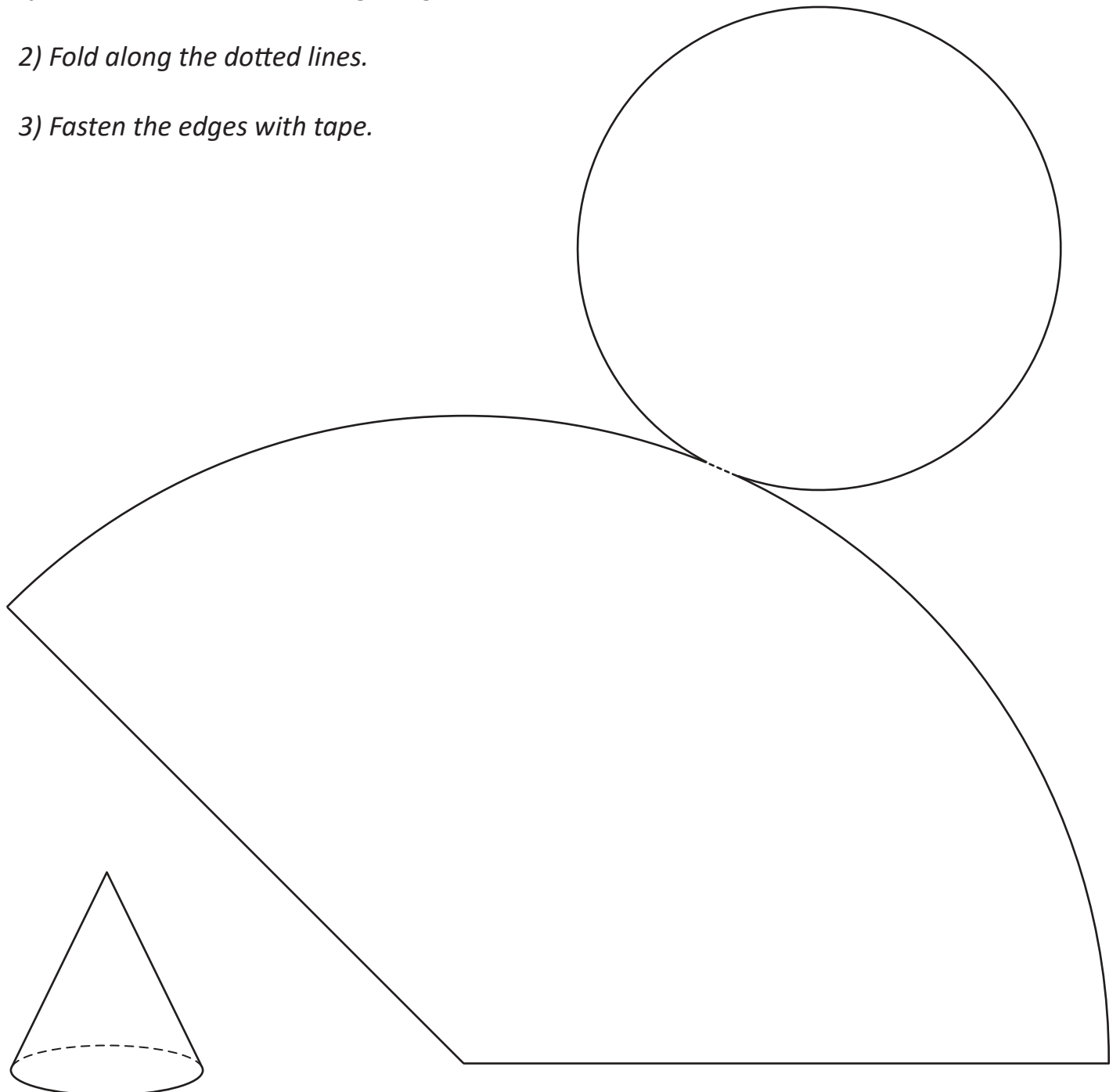
Instructions:

1) *Cut along the bold lines.*

Note: Leave a small amount of the circumference of the circle attached to the larger segment.

2) *Fold along the dotted lines.*

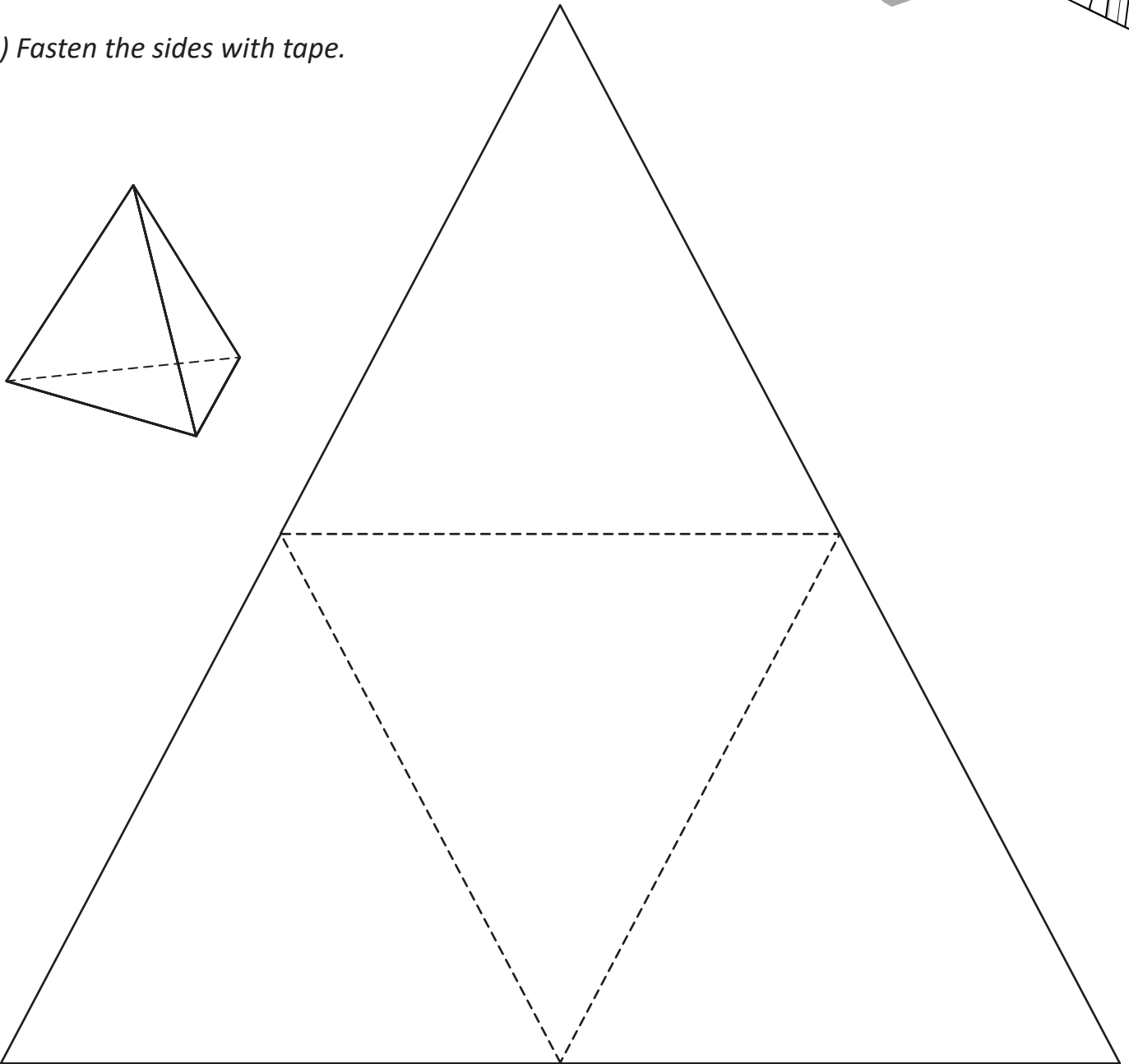
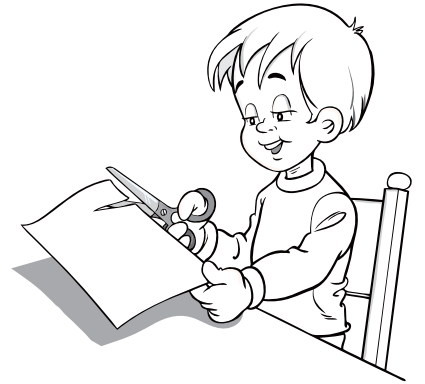
3) *Fasten the edges with tape.*



NET OF A TETRAHEDRON

Instructions:

- 1) Cut along the bold lines.*
- 2) Fold along the dotted lines.*
- 3) Fasten the sides with tape.*



NET OF A TRIANGULAR

PRISM

Instructions:

- 1) Cut along the bold lines.*
- 2) Fold along the dotted lines.*
- 3) Fasten the edges with tape.*

